

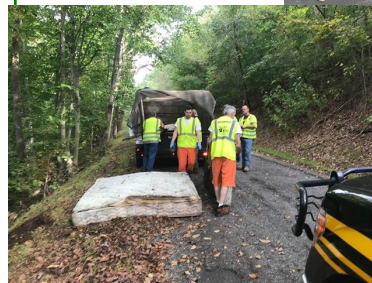
10. Has the amount to be charged been the same every year?

Designation fees have allow the Authority to reduce the charges to property owner over the years. Rates and Charges were able to be reduced by putting a designation fee on the landfills. Landfills are now charged \$2.00 per ton, that will come back to JBRSWA to offset the rates and charges.

If the disposal fee revenue increases or decreased from the projections in the Plan, or other revenue sources change the Authority may evaluate the fee amount to determine the rate needed.

The **JB Green Team** is proud to serve the Jefferson and Belmont Communities.

For More information you can visit our website at jbgreenteam.org or contact the Executive Director at (740) 266-6899



JEFFERSON-BELMONT REGIONAL SOLID WASTE AUTHORITY



GUIDE FOR OUR RATES & CHARGES

OFFICE LOCATIONS:

228 Technology Way
Steubenville, Ohio 43952
Phone: 740-266-6899
Fax: 740-266-6895
&
67895 Pickering Road
St. Clairsville, OH 43950
Phone: 740-296-5376
Fax: 740-296-5397

www.jbgreenteam.org

BRIEFLY ABOUT US:

The Solid Waste Authority of Jefferson &

Belmont Counties formed: In 1989, Jefferson & Belmont Counties formed the Jefferson -Belmont Regional Solid Waste Authority (JBRSWA) AKA the JB Green Team, as the state mandated county governmental agency created by House Bill 592. Our Board of Trustees is composed of 15 members representing both Counties as specified in the provisions of the Ohio Revised Code 3734-54.

Our mandate is directed by the Ohio EPA. The JBRSWA is responsible for implementing a Solid Waste Plan designed to achieve the goals set by the Ohio EPA for waste reduction, recycling of Paper, Co-mingled & Glass, & reducing reliance on land filling waste generated within the two counties. To pay for these required programs House Bill 592 allows for three types of fees (disposal, generation & designation) & as a last resort charging property.

JB Green Team also provides Community Cleanups, Electronic / Tires / Household Hazardous Waste and Paint Collections, Litter Enforcement, Education & School Programs services to its residents.

COMMON QUESTIONS & ANSWERS ABOUT THE RATES AND CHARGES:

1. What is this charge?

This charge is a "municipal waste rates & charges" to help fund waste management programs required by the Ohio EPA. It is levied only against lots or parcels that are improved, or in the process of being improved, with at least one permanent, portable, or temporary building. Not all property generates waste which is why this a charge specifically on improved parcels.

2. How much is this charge?

This is a \$2.00 per improved parcel with the Auditor's handling fee of 3%. The Authority does not receive any of the 3% handling fee.

3. Doesn't the charge have to be voted on by the residents?

No. By law (HB592) each County in Ohio must offer ways to manage solid waste through reduction, re-using & recycling programs. In order to pay for this management, Revised Code 343.08 and 343.011 allows Authorities to charges on approved parcels in order to pay for these programs.

4. Why should I have to pay when I don't feel I generate very much waste?

Many residents do an excellent job of recycling & place very little in the waste stream. This charge pays for the recycling program as well as community clean ups & other collections we have throughout the year.

5. I own a lot of land, will this be charged on each of my acres?

The charge is on improved parcels only. An improved parcel is one that has been improved with a house or other structure. Any vacant lots or empty parcels/acreage do not get charged.

6. How long will this remain?

The Authority will reassess the need each year and may lower the charge to a minimum or to match only what is needed to fund our operations.

7. I recycle. Don't you receive enough money from the recycling you receive?

It is true that we generate some money from the paper and commingled recycling, but it does not cover the costs of fuel, maintenance & other costs associated with running those programs. Also, recycling is a commodity, and prices for the recycling fluctuate so the amount we receive varies.

8. How often?

This charge is applied once a year (or divided into half at twice a year). If the disposal fee revenue increases above the projections in the Plan Update, or other revenue sources increase the Authority will evaluate the charged fee amount to determine if a reduction is achievable.

9.) How did the amount to be charged be decided?

A specific formula was used to calculate the exact amount needed for operating costs. The budget amount needed minus the estimated amount collected from designation fees equated the rates and charges divided by the number of improved parcels in both counties. However, designation fees have allowed the Solid Waste Authority to reduce the charges to the property owner.

Q&A's continued —>